



Clinton County

2019 ANNUAL REPORT

BY THE NUMBERS



1,167 youth participated in 4-H, early childhood or after school programs



379 adults and youth benefited from health and nutrition programs



Clinton County students received \$14,300,503 in financial aid from MSU



More than \$9,114,395 was spent with local businesses

MESSAGE FROM THE DISTRICT DIRECTOR

In 2019, Michigan State University Extension helped its partner, Clinton County, meet needs of County residents through education, consultation and collaboration. Your local MSU Extension staff and the statewide network of Educators provided information and expertise to local farmers, government officials, local and state employees, as well as, County youth and adult residents. MSU Extension has over 200 programs and continually strives to meet the needs of Michiganders with research backed, unbiased information to help improve their lives.



This annual report gives examples of some of MSU Extension's accomplishments and the impact that we continue to have in the County. Thank you for the opportunity to share our most valuable resource – our people. Whether taking phone calls, answering the many walk-in questions or providing education programs to groups or individuals, we strive to provide answers to questions that help solve real problems right here in Clinton County.

Bill Hendrian,
District 8 Director

CONTACT



Clinton MSU Extension
100 E. State St., Ste. G100
St. Johns, MI 48879



canr.msu.edu/outreach
msue.clinton@county.msu.edu



Michigan State University Extension



989-224-5240



@MSUEExtension

MICHIGAN STATE
UNIVERSITY

Extension

Program Highlights



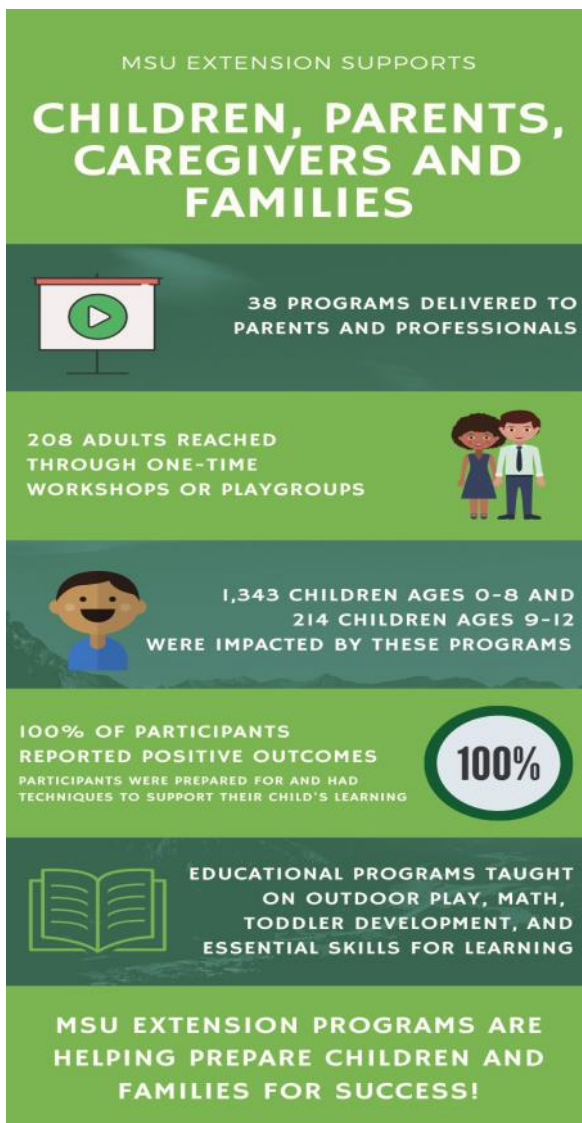
MSU Extension aims to improve the knowledge, skills and behavior of how individuals view nutrition.

COOKING MATTERS

Roxanne White, Community Nutrition Instructor, worked with youth throughout Clinton County in a number of settings showing them how to make healthy foods and drinks (without sugar) that taste great. Many students were shocked at how much they loved the taste of the healthy snacks. Several students went home and made the snacks for their family members or asked their parents to purchase the ingredients at the store so they could make the snack at home. One group in Bath Township especially enjoyed a recipe for banana pudding where healthy ingredients were all added to a sandwich bag and mixed by crushing– making a healthy snack that could be added to their lunch bag or just taken along to eat when they got hungry.

PARENTING AND YOUTH

Children & Youth Program Instructor, Patti Marrs, worked with preschoolers and parents to create healthy play and learning environments. Sometimes just gathering children around a good book would go a long way and provide busy parents an opportunity to take a break. In addition to the many youth and families reached noted in the infographic to the left, Patti stepped up to assist foster families. A program that MSU Extension started years ago, Work Of Heart, is no longer in the MSU Extension fold. This program provided needed assistance to foster youth and parents by providing safe places for learning and engagement. Patti stepped up in 2019 and helped the program conclude and then transition to another local agency. Patti's tireless efforts are just an example of the many parenting and youth development experts from MSU Extension that serve the county and state. We are very grateful for her service to Clinton County.



Program Highlights

VIRTUAL FARM RESOURCES

Monica Jean, District 8 Field Crops Educator, and the MSU Extension field crops team have developed several online programs. Farmers and agribusiness across Michigan listen in to these programs which include the Field Crops Webinar series, Virtual Breakfast and “In the Weeds” podcast. The webinar typically has 90 attendees and offers nine different topics. In 2019, 50% of attendees reported changing an aspect of their farm, which affected 14,000 acres and saved farmers in Michigan \$99,000 by managing risk and improving production efficiency. In 2019, 921 people participated in the Virtual breakfast, a live presentation with specialists during the growing season. The “In the Weeds” podcast began in late 2019 and currently has 12 posted podcasts played 1,300 times.



“In the weeds” discusses critical issues facing our farming industry every other week. Farmers can participate by phone, mobile device or by playing the audio. https://www.canr.msu.edu/field_crops/in-the-weeds

FARM MANAGEMENT

Roger Betz, Farm Business Educator with MSU Extension, serves Clinton County farmers. His main area of focus is in farm management. In 2019 Roger worked with area farmers on issues such as new tax law, succession and estate planning, and budgets. MSU Extension recognizes that with farming comes emotional stress. Roger works with a team of educators who are working to provide information on managing farm stress and to reduce the stigma of mental health and to make sure that all farmers and farm families have access to the help they need. If you are dealing with thoughts of depression or anxiety, please talk to your physician. If you have suicidal thoughts, **please reach out for help**. National Suicide Prevention - 1-800-273-TALK (8255)
www.canr.msu.edu/managing_farm_stress/



MSU Extension is here to assist farmers, families and individuals with issues such as succession & estate planning, budgets, and managing farm stress.

SWINE EDUCATION

MSU Extension educator, Casey Zangaro, served Clinton County and pork producers throughout the state with her expertise. Through an agreement with High Lean LLC, Casey assessed over 70 grow-finish swine barns. Taking into consideration barn conditions and swine health, Casey was able to assist farmers prepare to send pigs to most U.S. slaughter plants. Casey worked with youth who have an interest in raising and showing pigs. Topics such as biosecurity, health and overall nutrition were just some of the areas covered by her programs. Casey was able to reach over 280 youth and adult participants in Clinton and surrounding counties. Casey’s programing is critical to both novice and commercial pig enthusiasts.



Best practices are very important to follow to assure healthy animals and producers. For information on swine education, please contact Casey at zangaroc@msu.edu.

Program Highlights



4-H is Michigan's largest youth development program serving over 200,000 youth each year.

4-H YOUTH DEVELOPMENT

In 2019 4-H Program Coordinator, Corissa Harris, had a busy year from start to finish. Before the fair season began, Corissa worked with the fair board, county commissioners and the community to upgrade some of the facilities at the fair grounds. Corissa held numerous workshops ranging from biosecurity issues to livestock sales to help Clinton County youth prepare their projects for a successful fair season. As usual, top performers were rewarded with special events and even trips. Clinton County youth more than held their own in the wide variety of leadership programs throughout the state. 2019 was a successful year by all measures and culminated with an exciting fair, which also provided the last stop on the district wide tour by MSU Extension Director, Dr. Jeff Dwyer.



Educator, Lois Wolfson, draws a sample of living organisms from Park Lake in July of 2019 for participants to examine.

WATER QUALITY

MSU Extension works with community leaders to create water-protection strategies, landowners, and industry to reduce risks of water pollution, and state agencies to develop water quality information systems. Extension offers both in-person and online workshops, classes, and programs that help to make Michigan residents more effective stewards of one of our most precious natural resources. Michigan Lake & Stream Leaders Institute, Conservation Stewards Program, Michigan Water School: Essentials for Elected Officials, Introduction to Lakes Online, and Clean Boats Clean Waters are just a few examples of Extension offered programming. In 2019 The Friends of Park Lake invited MSU Extension to provide education at their annual event.

OVER THE COUNTER

Many residents like the personal touch or for other reasons come visit with us at the office. Many 4-H youth, volunteers and parents attend meetings or drop off information, fees, or just to say hello. Many local residents would like a plant or insect identified. Gardeners and farmers often stop by to pick up soil test kits. In fact, in 2019 Clinton County residents used 180 soil test kits. When someone visits the local office, the local support staff are the link to many MSU Extension services. Whether it is by appointment, by phone, or by walk-in, our local office is here to serve the needs of Clinton County.



Michigan State University Extension continues to serve the residents of Clinton County and we welcome you to stop in and say hello.

Featured County Story



Christine Heverly started her journey with MSU Extension as a 4-H Club Member in Clinton County in 1993. A little more than eight years later she worked as a summer employee with the Clinton County 4-H program which eventually led to her joining the organization as a 4-H Program Coordinator in Eaton County. Christine became a MSU Extension Educator in 2014 and we are fortunate to have her back in the Clinton County office.

VOLUNTEER CENTRAL

In 2019, Christine Heverly was part of a team that provided leadership to the development of a new volunteer screening and data management tool called Volunteer Central. Volunteer Central was custom-made according to our needs to screen and utilize volunteers. Volunteer Central hosts platforms for staff and volunteer access. Created to increase efficiency while allowing volunteer applicants and staff to track progress through the Volunteer Selection Process in real time. Volunteer Central also provides volunteers with space to capture information related to their volunteer service such as volunteer hours, trainings, or certifications.

To prepare for a January 2020 launch, Christine trained over 250 staff to use the system and was a vital part of creating several fact sheets and training resources.

What is an MSU Extension Volunteer?

MSU Extension staff often work side-by-side with volunteers. Volunteers are individuals who freely offer their time and talents to represent or perform service on behalf of MSU Extension. MSU Extension volunteers play a vital role in the growth and development of the Michigan residents we serve through a multitude of programs.

In 2019, MSU Extension made the decision to define volunteers more specifically according to the role they play in our local communities. This integral part of creating safe environments for staff, volunteers and program participants. Providing volunteers with a Gold level or a Silver level status of volunteering helps better define their role and the expectations staff have for their service.

Gold Volunteers: These individuals interact with youth and/or adults in meaningful ways on behalf of MSU Extension. This includes providing training, education, leadership or support to MSU Extension offices, programs, events or sub-organizations such as a 4-H club, an Extension Master Gardener class or association. This includes anyone who:

- Serves as a chaperone or counselor.
- Interns with MSU in an unpaid position.
- Handles finances on behalf of MSU Extension programs.
- Forms relationships with youth and/or adults on behalf of MSU Extension.
- Holds MSU Extension-sponsored events, activities or programs at their home, farm or property.

Business partners or field-trip locations are excluded from these criteria. However, note that Gold volunteers and/or staff members must be present during events occurring at such locations.

Silver Volunteers: These individuals have no direct interaction with youth or vulnerable populations and no to low opportunity to form relationships with youth or vulnerable populations on behalf of MSU Extension. Exempt from this rule are those with minimal interaction, such as parking attendants or people handing out ribbons or opening gates (see roles not requiring screening section below). Silver volunteers also have no access to personal information such as phone numbers, birthdates, addresses, Social Security numbers, email addresses and similar information. Note that a Gold volunteer or MSU Extension employee must be present anytime youth and adults are interacting together and accessible to Silver volunteers at events.

MSU Extension staff located in Clinton County

Faith Cullens	Dairy Educator	989-224-5249	cullensf@msu.edu
Corissa Harris	4-H Program Coordinator	989-224-5227	harri446@msu.edu
Bill Hendrian	District 8 Director	231-843-4395	hendria2@msu.edu
Christine Heverly	Community Nutrition Instructor	989-224-6454	sisungch@msu.edu
Monica Jean	Field Crops Educator	989-224-5240	atkinmon@msu.edu
Patricia Marrs	Early Childhood Instructor	989-227-6466	marrspat@msu.edu
Morgan Scharphorn	MSU Support Staff	989-224-5242	hathcox@msu.edu
Nicole Walker	Office Manager	989-224-5241	walke628@msu.edu
Roxanne White	Community Nutrition Instructor	989-224-5238	harrin76@msu.edu

Additional MSU Extension staff serving Clinton County

Roger Betz	Farm Management Educator	269-781-0784	betz@msu.edu
Isabel Branstrom	Consumer Horticulture Educator	517-676-7301	branst2@msu.edu
Christi Demitz	Disease Prevention Educator	616-632-7881	demitzch@msu.edu
Lori Eccles	HNI Supervising Educator	517-543-4472	ecclesl@msu.edu
Paige Filice	RIPPLE Invasive Species Educator	517-676-7291	filicepa@msu.edu
Charles Gould	Bioenergy Educator	616-994-4547	gouldm@msu.edu
Kevin Gould	Livestock Beef Educator	616-527-5357	gouldk@msu.edu
Tom Guthrie	Equine Educator	517-788-4292	guthri19@msu.edu
Abigail Harper	Community Foods Educator	517-676-7298	harperab@msu.edu
Sheilah Hebert	Maternal Infant Health Educator	517-432-3076	murphysh@msu.edu
Brenda Long	Housing & Financial Educator	517-527-5357	longbr@msu.edu
Diane Longanbach	Product Center Counselor	989-875-5293	longbach@msu.edu
Joyce McGarry	Food Safety Educator	517-887-4587	mcgarry@msu.edu
Rachel Puckett	AmeriCorps Program Director	517-676-7207	pucket21@msu.edu
Jade Richards	Behavioral Health Instructor	517-887-4575	richa572@msu.edu
Erica Rogers	Environmental Mgmt. Educator	989-875-5296	roger392@msu.edu
Dave Rowley	Govt. & Public Relations Educator	989-875-5233	rowleyd2@msu.edu
Katie Ockert	Chronic Wasting Disease Educator	517-527-5357	ockertka@msu.edu
Holly Tired	Social Emotional Educator	616-632-7893	tired@msu.edu
Casey Zangaro	Swine Educator	989-875-5292	zangaroc@msu.edu

Supporting MSU Extension

For more than 100 years, MSU Extension staff have been helping people in our communities. MSU Extension values the opportunities made possible by our federal, state and local partners. In addition, our staff often seek grants that focus on particular needs that enable us to focus our efforts where necessary. In fact, grants made up the largest percentage of our statewide funding in 2019. Another important resource comes from donors. MSU Extension receives generous support from individuals and organizations who are passionate about specific work we do and want to make possible even more education. Donors fund local programs or offer opportunities to youth to participate in activities beyond the local program. Gifts sometimes fund research positions or just help boost local operations. To learn more about giving to MSU Extension, visit extension.msu.edu/giving.

Through successful partnership and collaboration with Clinton County, MSU Extension is able to continue its local presence and to provide vital educational resources and programming in such areas as community and economic development, agriculture, land use, health and nutrition, and youth development.

Thank you Clinton County!



MISSION:

Michigan State University Extension helps people improve their lives through an educational process that applies knowledge to critical issues, needs and opportunities.

MSU is an affirmative-action, equal-opportunity employer, committed to achieving excellence through a diverse workforce and inclusive culture that encourages all people to reach their full potential. Michigan State University Extension programs and materials are open to all without regard to race, color, national origin, gender, gender identity, religion, age, height, weight, disability, political beliefs, sexual orientation, marital status, family status or veteran status. Issued in furtherance of MSU Extension work, acts of May 8 and June 30, 1914, in cooperation with the U.S. Department of Agriculture. Jeffrey W. Dwyer, Director, MSU Extension, East Lansing, MI 48824. This information is for educational purposes only. Reference to commercial products or trade names does not imply endorsement by MSU Extension or bias against those not mentioned. The 4-H Name and Emblem have special protections from Congress, protected by code 18 USC 707.